



An ENZACTA Product

Preliminary Efficacy Study of Polysaccharide-Peptides, know as “Alfa PXP Forte” in Multiple Sclerosis

Dr. L. Douglas Gabbert

Multiple Sclerosis Introduction

Multiple sclerosis affects 350,000 Americans and is, with the exception of trauma, the most frequent cause of neurological disability beginning in early to middle adulthood. MS is twice as common in females as in males and its occurrence is unusual before adolescence. A person has an increased risk of developing the disease from the teen years to age 40 with the risk gradually declining thereafter.

MS is considered an autoimmune disease, whereby the body's own immune system, which normally targets and destroys substances foreign to the body such as bacteria, mistakenly attacks normal tissues. In MS, the immune system attacks the brain and spinal cord, the two components of the central nervous system.

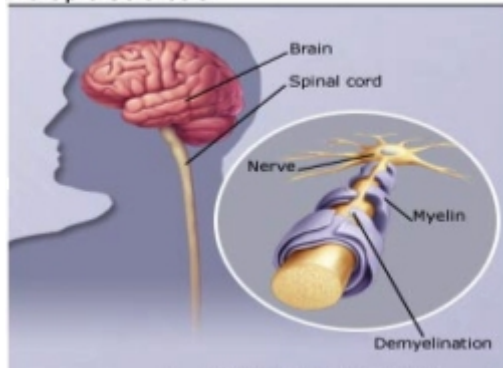
The central nervous system is made up of nerves that act as the body's messenger system. Each nerve is covered by a fatty substance called myelin, which insulates the nerves and helps in the transmission of nerve impulses, or messages, between the brain and other parts of the body. These messages control muscle movements, such as walking and talking.

MS gets its name from the buildup of scar tissue (sclerosis) in the brain and/or spinal cord. The scar tissue or plaques form when the protective and insulating myelin covering the nerves is destroyed, a process called demyelination. Without the myelin, electrical signals transmitted throughout the brain and spinal cord are disrupted or halted. The brain then becomes unable to send and to receive messages. It is this breakdown of communication that causes the symptoms of MS.

Although the nerves can regain myelin, this process is not fast enough to outpace the deterioration that occurs in MS. The types of symptoms, severity of symptoms, and the course of MS vary widely, partly due to the location of the scar tissue and the extent of demyelination.

Multiple sclerosis symptoms generally appear between the ages of 20 and 40. The onset of MS may be dramatic or so mild that a person doesn't even notice any symptoms until far later in the course of the disease.

Multiple Sclerosis



Multiple Sclerosis Symptoms

The most common symptoms of MS include:

- Fatigue (most common), mental fatigue, drowsiness.
- Tingling, numbness, tremors.
- Sudden onset of paralysis.
- Loss of balance, coordination, dizziness & lightheaded.
- Weakness in one or more limbs.
- Blurred or double vision; optic neuritis.
- Slurred speech; swallowing problems.
- As the disease progresses, other symptoms may include muscle spasms & spasticity, sensitivity to heat, changes in thinking or perception, and sexual disturbances.
- Slowed thinking, decreased concentration & memory.
- Bladder incontinence and urgency; Urinary Tract Infections.
- Bowel problems: Constipation, diarrhea, irritable bowel syndrome.

Methodology & Test Subjects

Five volunteers were chosen who were each diagnosed by a physician and suffered from Multiple Sclerosis for a multitude of years and were in a very degenerative condition, from the Multiple Sclerosis Society in Santa Fe, New Mexico (USA) and one from Madison, Wisconsin. They were given the product to take three times daily for a period of 30-60 days. Three individuals completed the study, while two dropped out due to traveling and inability to follow the protocol.

Patient #1 & #2 had blood and urine Oxidative Stress Profiles completed at days 0, 30 & 60. They filled out symptom questionnaires at days 0 & 30. It was not necessary to complete a 60 day post-test symptom questionnaires as they had very few symptoms remaining at that point.

Patient #3 had a day 0 & 60 blood and urine Oxidative Stress Profile completed and also filled out the symptom questionnaires at days 0 & 60. All results are included in this clinical study report. The following are the protocols that were adhered to.

Polysaccharide-Peptides (Alfa PXP Forte) Clinical Study Protocol

1. Test subjects met the following criteria:

- No age limitation.
- Experiencing all of the following:
 - Medical Diagnosis of Multiple Sclerosis.
- The conditions or imbalances on the MS Questionnaires.

NOTE: (Each patient had been diagnosed with chronic degenerative Multiple Sclerosis).

2. Duration of Study: 0, 30 & 60 days pre- and post-testing.

3. Pre- and post testing was performed:

- Interview for qualification.
- Physical and symptom evaluation.
- Completed a pre and post physical and symptom assessment form.
- Completed a MS questionnaire, before and after
- Pre and post Oxidative Stress Panel (Blood and Urine).

4. Intake (Diet, medication, and supplementation):

- Maintained.
 - current eating habits.
 - Medications.
 - Vitamins.
 - other supplements.
- Variable compliance on food elimination.
 - dairy products, sugar, caffeine, alcohol and tobacco for duration of the study (these are optional).

5. Lifestyle:

- Maintained current lifestyle.
- Avoided long distance air travel.

6. Patients completed Informed Consent Form.

7. Dosage: 5 grams (1 tsp.), 3 times a day.

8. The physical, symptom, and laboratory measures were all completed.

9. Inclusion/Exclusion criteria was followed.

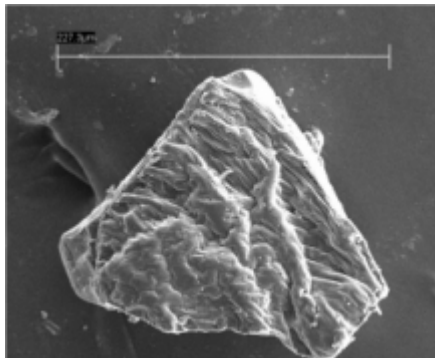


**PRODUCT:
POLYSACCHARIDE-PEPTIDES
(Alfa PXP Forte's)**

Made from SPECIALLY SELECTED VARIETIES of non-GMO, non-hybrid native strains of rice that are ORGANICALLY GROWN from the MOST FERTILE VALLEY of SIAM - where the soil has a HIGH ALKALINE LEVEL - thus, making nutrients in each grain, INTACT And MORE POTENT!

It undergoes a state-of-the-art Proprietary Biotechnology called "ALPHAGLYCANOLOGY"

"The functional value is enhanced by the altering of its chemical and molecular structure. By creating a smaller molecular size it creates a higher bioavailability of nutrients to the cell"



**Polysaccharide-Peptides
(Alfa PXP Forte's)
STRUCTURE**

A unique & proprietary formulation consisting of a complex form of carbohydrate, crude protein and essential minerals by using high pressure and mechanical hydrolysis to make a complex formulation of Alphaglycans designated "PolySaccharide-Peptides"

**Polysaccharide-Peptides (Alfa PXP Forte)
FOOD FOR THE CELL**

Scientists and researchers have developed a proprietary technology employing both biotechnology and nanotechnology to process essential nutrients (polysaccharide-Peptides), from specially selected fractions of whole rice that creates a bio-available form of carbohydrates and amino acids that directly feed the cell itself. When the cell has the proper nutrients (glucose and amino acids), in a form that the DNA within the cell recognizes, it can utilize this pure, biological fuel to feed the mitochondria (the energy source and powerhouse of the body), thus producing ATP, or pure energy, for every bodily process that occurs within the human being. Many of our foods that we consume today are so processed, adulterated and devitalized (wheat flour, hydrogenated oils and trans-fatty acids, white rice, dairy products, and sugar), that the cells can no longer

identify and thus metabolize these substances for the essential functions of the body, i.e. energy and cellular regeneration. If the cell cannot, or chooses not to assimilate and utilize these nutrients it leads to an accumulation in the body of waste products, whereby serious metabolic conditions such as hyperinsulinemia may develop. This condition and other resulting metabolic imbalances (Syndrome X) are often the root cause of the majority of dysfunctional metabolic processes such as diabetes, cardiovascular disease and degenerative neurological disorders such as Alzheimer's, Parkinson's and Multiple Sclerosis.

SIDE EFFECTS

The other benefit of **Alfa PXP Forte's** is that they have absolutely no known side effects and can be taken along with any other medications if necessary. The **Alfa PXP Forte's** have actually been shown to even enhance the effects of prescription drugs an individual may currently be taking. As with all medications one should always consult with your physician before making changes in any prescription drug one may be taking. However, **Alfa PXP Forte's** are a food and not classified as a drug.

Immediate Benefits Recognized

- Increased Energy & Vitality.
- Regulated Blood Sugar Levels.
- Improved Sleep Patterns & Less Stress in Life.
- Improvement of Digestion & Elimination.
- Memory Enhancement.
- Better Overall Circulation and Metabolism.
- Elimination of Bladder Urgency and Incontinence.
- Stopped Chronic Diarrhea.
- Improved Overall Mood, Emotions & Agitation.
- Weight Normalization.
- Enhanced Joint Movement and Flexibility.
- Pain and Joint Inflammation Reduction.
- Confusion, Pessimism and Worry Improved.
- Increased Resistance to Infection.
- Relief from Abdominal Pain.
- Reduced Colds and Flu.
- Improved Physical Strength.
- From Hopelessness to Optimistic (Excited about results).
- Low Back Pain Subsided.
- Feeling of Pins and Needles in Extremities Improved.
- Able to Tolerate Changes in Temperature.

- Improvement in Physical Balance and Vertigo.
- Feeling in Legs and Toes that Had None Before.
- Blurred or Double Vision Improved to Disappeared.
- Overall Feeling Better, More Positive and Healthier.

Laboratory Results



In each of the three patients that did pre- and post- blood and urine oxidative stress panels, there was an overall significant improvement in the reduction of hydroxyl and free radicals. Two of the patients increased their SOD levels by almost three-fold, while one of the patients actually had a decrease in SOD. I would attribute the reduction to one if not all of these three factors:

- 1.- As SOD's are used to rapidly convert superoxide anion radicals to hydrogen peroxide in the body, which is less toxic to the cells, and this patient had a reduction in free radicals as well as the hydroxyl radicals, it would appear that the SOD's were excessively utilized for this process. The SOD's may have been elevated, as with the other two patients, in the first 30 days as this patient only did a 0 & 60 day test.
- 2.- The body may have had deficient manganese, copper and zinc reserves to replenish available SOD's.
- 3.- The test was performed after Christmas holidays and may have also been influenced by extreme stresses.

In one patient with concurrent diabetes there was a significant decrease in blood sugars from over 200 down to the low 100's on a consistent basis, with self-testing. This could be due in part to current research demonstrating that the addition of SOD and catalase to cultures of pancreatic islets exposed simultaneously to alloxan resulted in a partial restoration of insulin synthesis. Polysaccharide-Peptides delay the production of Single-Molecule-Sugar (Glucose) . This delay will slow down the increase of the sugar in the blood, while the Amino Acids will help the pancreas secrete adequate insulin so sugars are brought to the cells at a more efficient rate, thereby, bringing normalcy in the blood sugar level.

The patients did not perform any internal body cleansing or detoxification procedures to enhance the elimination of toxins, which would have been recommended protocol and care if they had not been involved in the study.

Conclusion

All five individuals participating in the study received significant reduction in their Multiple Sclerosis related symptoms. A reduction in degenerative disease causing free radicals and an increase in antioxidants such as superoxide dismutase and the glutathiones was demonstrated in the Oxidative Stress Profiles. As the S.O.D. antioxidant increases were almost triple in the first 30 days and then declined afterward it would most likely be attributed to the metabolism of the free radicals, a metabolic balancing, or any of the reasons previously suggested in this study.

One of the patients who also has diabetes experienced immediate and continued improvements in blood sugar regulation.

Patients experienced a normalization of weight (decrease in obesity and maintaining of weight in one not wishing to lose weight).

The results of this study along with the in-vitro research would demonstrate cellular protection from particular neurotoxins known to have a deleterious and degenerative effect on all nerve cells, (i.e. Beta Amyloids, glutamates, and peroxides). The nutrients in the ***Alfa PXP Forte's*** would also provide the cellular fuel necessary for cellular communication and regeneration.

BENEFITS OF

Polysaccharide-Peptides (Alfa PXP Forte)

Here is a list of the effects of daily consumption of Alfa-PXP Forte's:

- Increased Antioxidant Production (S.O.D.).
- Improved Intracellular Environment for Optimal Gene Expression.
- Optimal ATP Production in the cell.
- Reduced Damage from Free Radicals.
- Neuronal Cells Protection Activity.
- Enhanced Detoxification Process.
- Reduced Degenerative Disorders.
- Delayed Aging Process.
- Increased Sexual Potency / Frequency.
- Improved Metabolism.

APPLICATIONS of

Polysaccharide-Peptides (Alfa PXP Forte)

- To support function and enhance internal environment of gastrointestinal organs for long term health
- To improve immunity for restoring and maintaining health
- Provides fiber-like action for proper elimination
- Limit toxic exposure to neurotoxins
- Provide energy and amino acids to enhance cellular function resulting in improved overall internal organ function and improved overall body function.
- As first line of nutritional support for chronic and degenerative neurological diseases and other metabolic disorders.

ANTI-AGING

Polysaccharide-Peptides (***Alfa PXP Forte***) can slow down the effects of Aging. Improvements can be seen in the anti-oxidant profiles as well as in degenerative processes.

Benefits have been demonstrated in the following areas:

- Increases SOD (superoxide dismutase), the master anti-oxidant.
- Increased level of the anti-oxidant Glutathione.
- Reduced level of Free Radicals.
- Enhanced Detoxification Process.
- Enhanced Pro-enzyme and Probiotic activities.
- Enhanced Cellular Glucose and Amino Acid Uptake.
- Enhanced ATP production from the Mitochondria.
- Enhanced Nucleotide production for DNA repair.
- Enhanced Cellular Environment for better Gene Expression.
- Enhanced Neuronal Protection from Neurotoxins (Beta Amyloid, peroxides and glutamates).

ROGUE PROTEINS

There is a lot of recent excitement throughout the scientific world on cellular activities in relation to ongoing research in many universities and institutions on topics such as PROTEIN FOLDING, SUGAR FOLDING, FREE RADICAL DAMAGE TO DNA, etc.

Scientists who have developed this unique product ***Alfa PXP Forte*** (Polysaccharide-Peptides) had the same interest, to supply cellular food that the cell's DNA could recognize and utilize in the manufacture of their proteins and in the manufacture of ATP or cellular energy.

The present food consumed by people in developed countries is predominantly processed food, treated with pesticides, insecticides and soil nutrients of chemical nature. The introduction of many different chemicals into the body along with the food we consume has interfered with normal functioning of cells both at their intrinsic and extrinsic functions. It is now known that many proteins fold up into abnormal forms, called ROGUE PROTEINS. These abnormal forms are the cause of a multitude of diseases.

Example: The underlying reason why Alzheimer's and Creutzfeldt-Jakob diseases cause dementia is because small clusters of Beta Amyloid molecules - the misfolded protein - disrupt the junctions between nerve cells in rat brains. (Prof Denis Selkoe of Harvard Medical School and colleagues - (NATURE Journal).

This would obviously hold true for Multiple Sclerosis and other neurological degenerative diseases.

And Prof. Christopher Dobson of Cambridge University, Prof. Massimo Stefani of the University of Florence and colleagues report in the journal NATURE that the real culprits of the diseases are the small clumps of abnormal proteins that form, before they assemble into deposits.

THE NEW RESEARCH APPEARS TO DISMISS ATTEMPTS TO TREAT THE DISEASES BY ATTACKING THE DEPOSITS AND INSTEAD INDICATES THAT SCIENTISTS MUST TRY TO PREVENT THE PROTEINS MISFOLDING IN THE FIRST PLACE.

The ongoing research, clinical observation and in-vitro studies shows that any product that can transfer amino acids according to the message sent by the DNA replication (messenger RNA) can manufacture normal proteins. These normal proteins which are essential for intrinsic and extrinsic activities, will also repair cellular damage (in-vitro studies done at PMK Research Institute in Thailand).

Dr. Mohammed Ishak, M.D.

Disclaimer: These statements have not been evaluated by the FDA. The product "Polysaccharide-Peptides (Alfa PXP Forte)" is not meant to treat, cure, prevent or diagnose any disease.

For information on ENZACTA products and their ingredients, please contact our Customer Service Department
© 2005 – ENZACTA USA, Inc., All Rights Reserved